

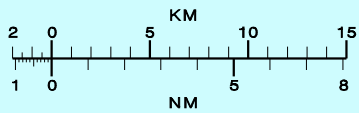
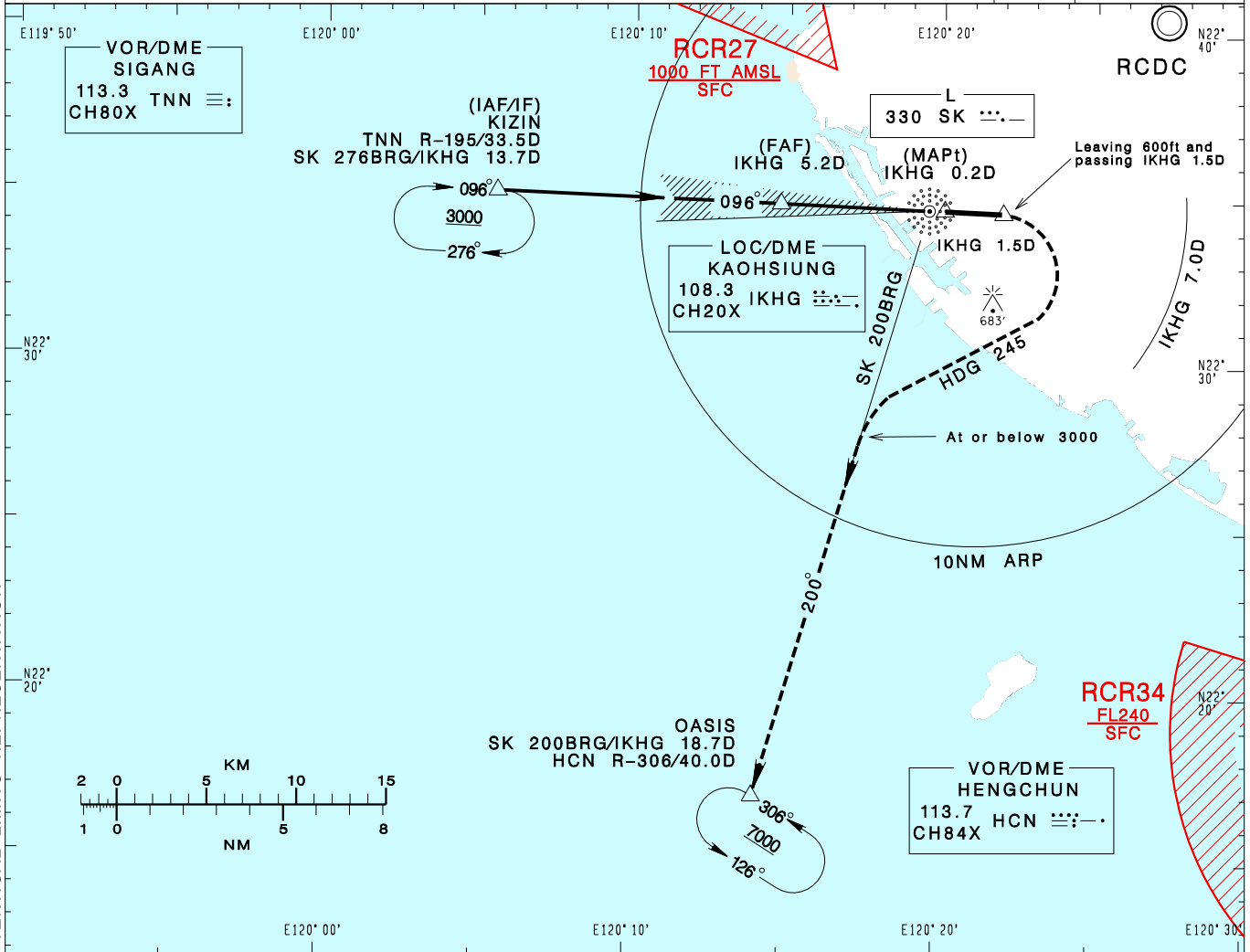
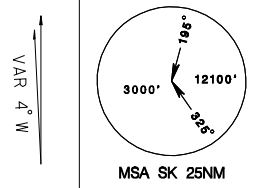
**高雄國際機場**  
KAOHSIUNG INTL AD

RCKH  
LOC RWY09

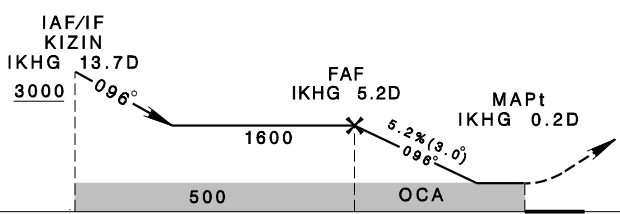
KAOHSIUNG APP 124.7 125.7	KAOHSIUNG TWR 118.7 120.7	ATIS 127.8
------------------------------	------------------------------	---------------

Apt Elev: 32' Rwy09 DTHR Elev: 21' Trans Level: FL130 Trans Alt: 11,000'

BEARINGS ARE MAGNETIC; DISTANCES ARE NAUTICAL MILES; ELEVATIONS, HEIGHTS IN FEET



5DME 1600	4DME 1290	3DME 970	2DME 650	DIST to IKHG ADVISORY ALT
--------------	--------------	-------------	-------------	------------------------------



**MISSED APCH:**  
CLIMB ON SK 096BRG UNTIL LEAVING 600 AND PASSING IKHG 1.5D, THEN TURN RIGHT HEADING 245, COMPLETING THE TURN WITHIN 7.0D FROM IKHG, TO INTERCEPT SK 200BRG AT OR BELOW 3000. PROCEED TO OASIS, CLIMB TO 7000 AND HOLD. MAX 230KT IAS UNTIL ESTABLISHED ON TRACK TO OASIS.

MINIMA (OCA IN FT, VIS IN M, OCH IN FT)

CATEGORY	A	B	C	D
STRAIGHT IN	500 <sup>800</sup> <sub>RVR750</sub> 479	500 <sup>800</sup> <sub>RVR750</sub> 479	500 <sup>1500</sup> <sub>RVR1500</sub> 479	500 <sup>1500</sup> <sub>RVR1500</sub> 479
STRAIGHT IN (ALS OUT)	500/1600 479	500/1600 479	500/2200 479	500/2200 479
CIRCLING	630/1900 598	840/2800 808	1080/3700 1048	1080/4600 1048

**NOTE**  
1. CIRCLING NOT AUTHORIZED NORTH OF RWY.  
2. ATS SURVEILLANCE REQUIRED.  
\*DME REQUIRED.

CHANGES: NEW PAGE NUMBER, UPDATE RESTRICTED AREA VERTICAL LIMITS REPRESENTATION